

ASSEMBLING THE BODY

TOOLS NEEDED:

Scissors, ruler, craft knife, tape

INSTRUCTIONS:

First, take a photo of these instructions so you don't lose them!

Next, cut all **RED** marked lines, including holes and slots (ask an adult to help you with craft knives).

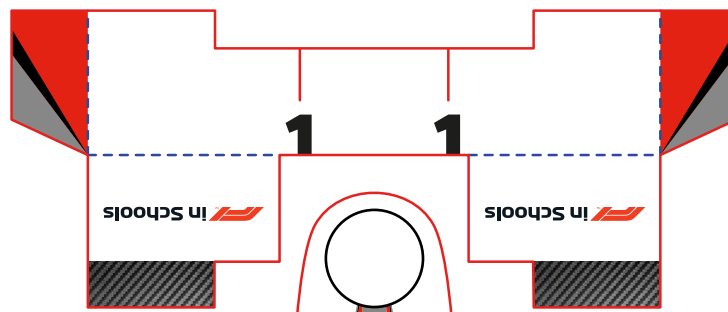
Using a ruler, fold along all **BLUE** dotted fold lines to start forming the shape of your car body.

Assemble the body around your finished chassis by matching and slotting the numbered tabs together underneath, from 1 to 7, securing these in place with a little piece of tape.

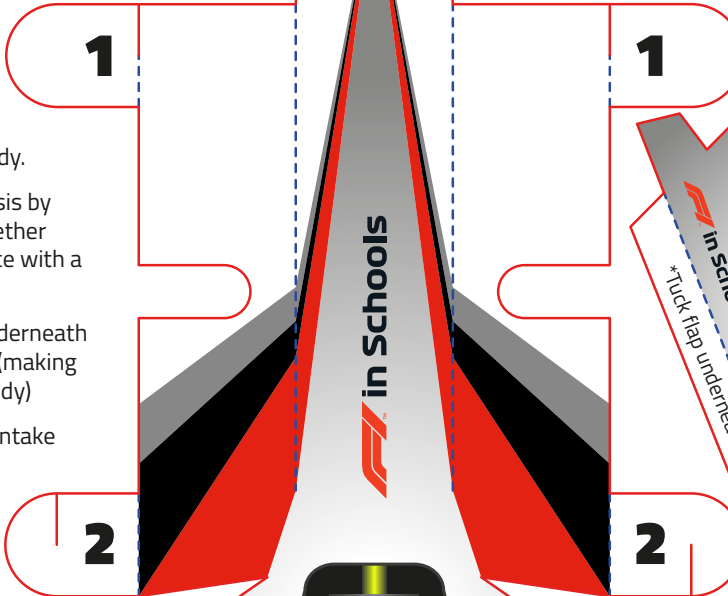
Slot the front wing onto the matching tabs underneath the nose of your car, along with the rear wing (making sure you hide the long tabs underneath the body)

The finishing touch is to fold and slot your air intake into the triangular cut in the top of your body, making sure the long tabs are hidden out of sight

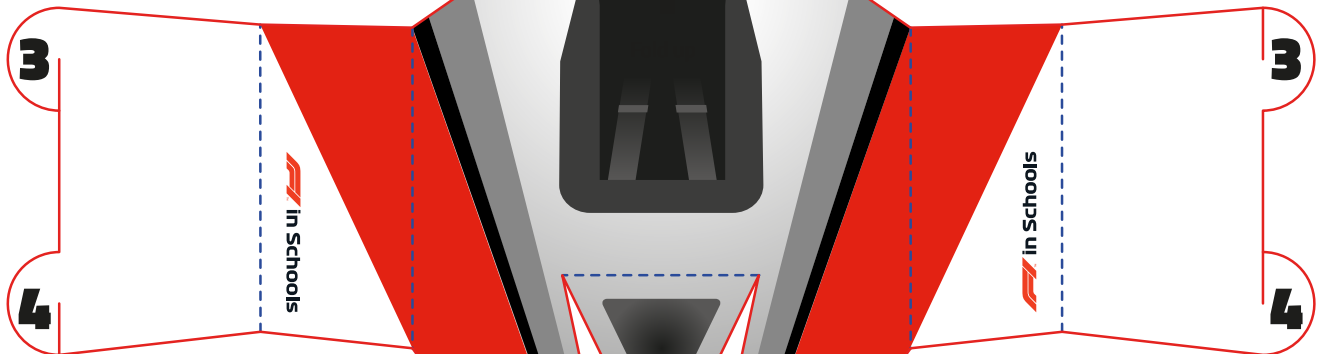
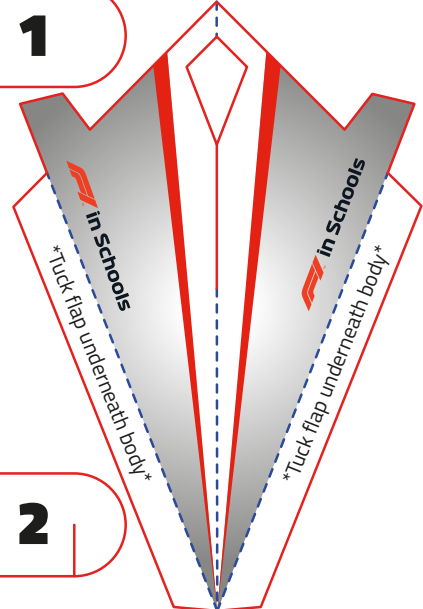
Now you're ready to find a downhill, line up next to a friend's car and let gravity take them to the finish line!



Front wing



Air intake



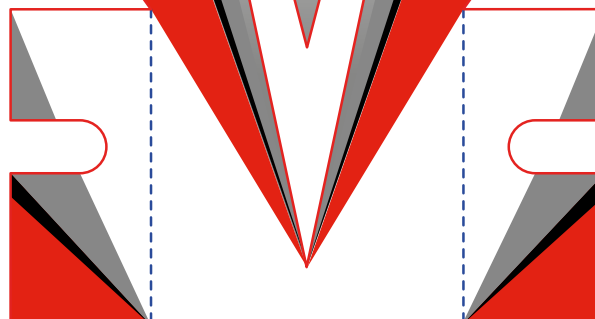
Body

KEY:

CUT THIS LINE



FOLD THIS LINE



Rear wing

